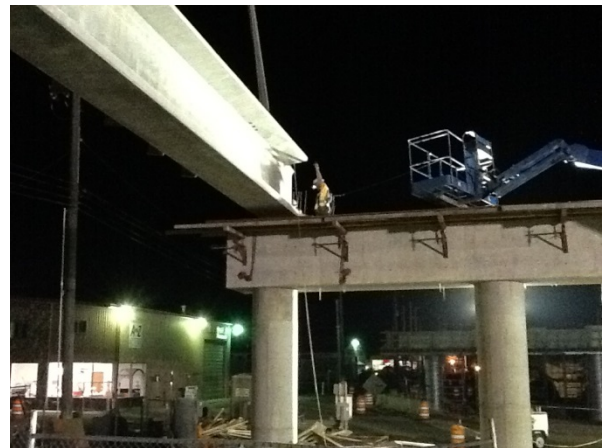
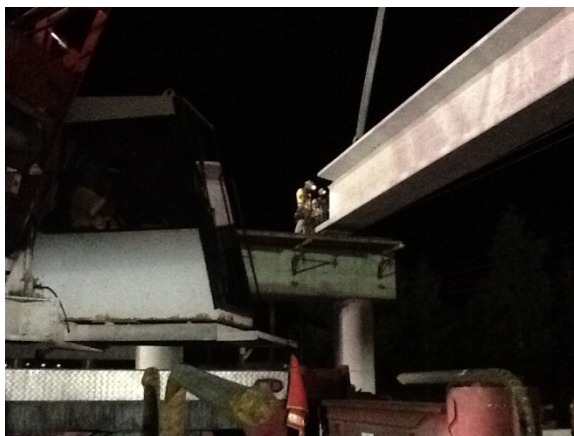
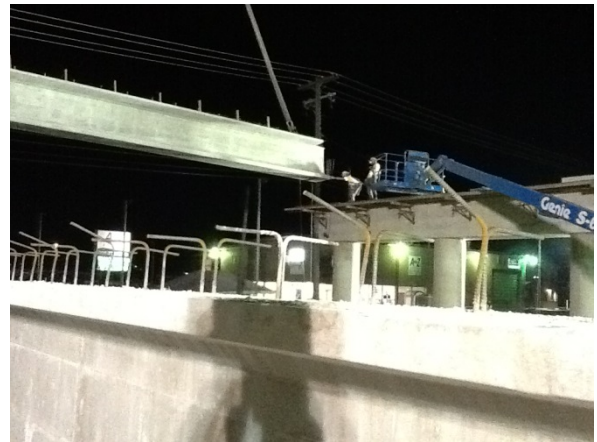
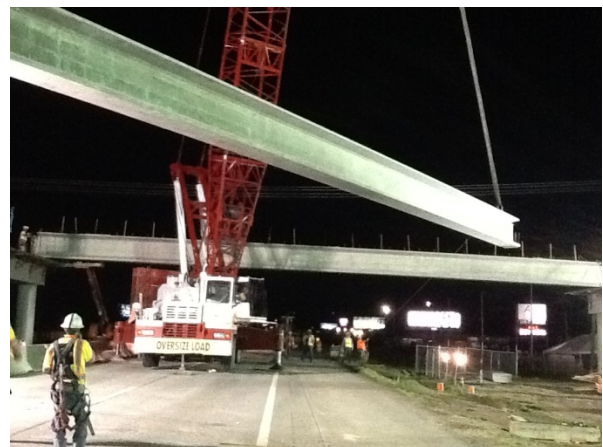
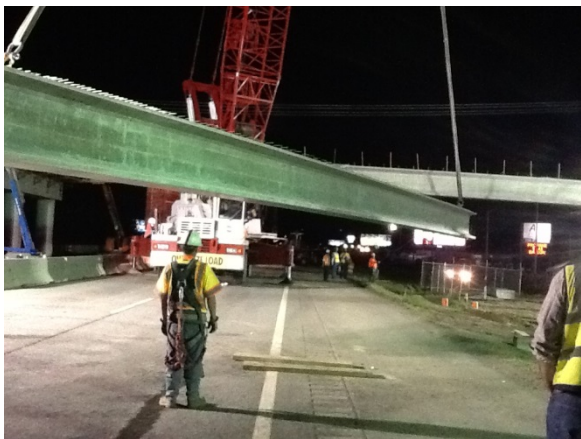
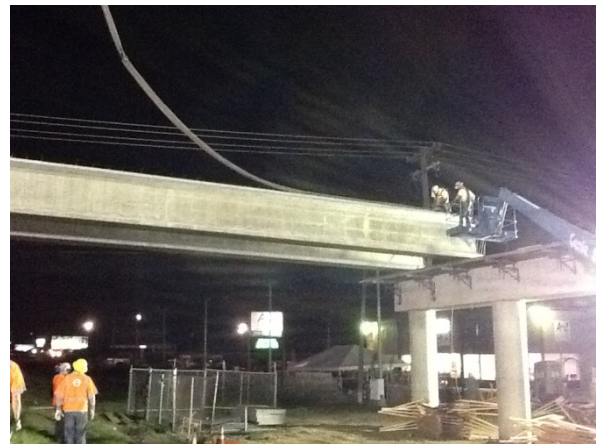
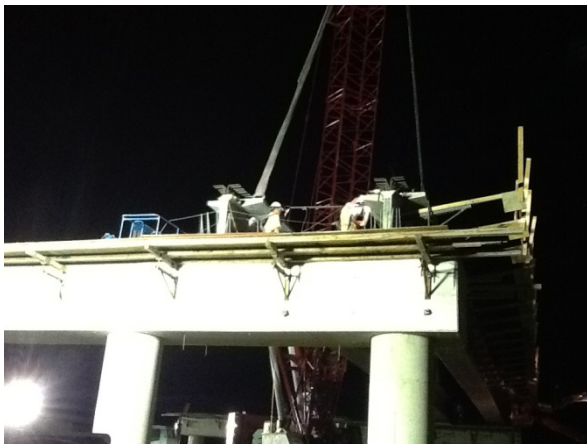
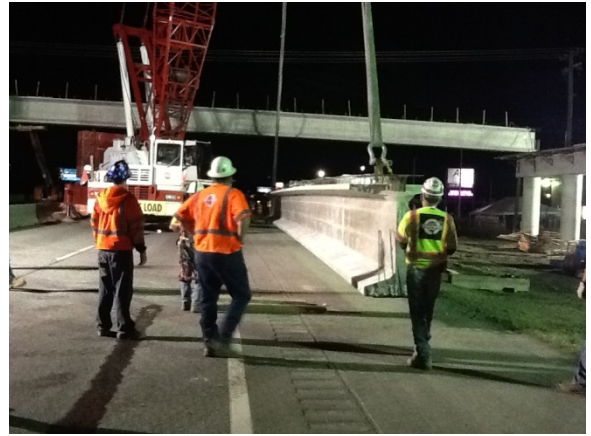


Setting the first girders over I-90 at Greensferry Road - April 21, 2015









Awesome! The coordination, timing and synchronization of activities of all the individuals involved in this activity over several hours of closing the east bound lanes of I-90 was an incredible performance. Congratulations to Wadsworth Construction personnel and all the sub-contractors with the crane service involved in setting the girders and flagging service in managing traffic through the detour and their presence at all intersections through the night. Thank you also to J-U-B Engineers for their construction oversight and inspection services. Job very well done by all!

